

WENDOUGEE

LK-64

MILQ II



USER OPERATION MANUAL

Thank you for purchasing our coffee grinder. Please read this manual thoroughly before installing and operating the grinder.

WUXI RUIKE AUTOMATION TECHNOLOGY CO., LTD.

Note: Our company reserves the right to modify this manual. In case of any discrepancies between the manual and the actual product, please refer to the actual product.

01	INTRODUCTION 1
02	SAFETY INSTRUCTION 2
03	MACHINE PARTS VIEW 3
04	MACHINE SIZE 6
05	OPERATION GUIDE 7
06	MAINTENANCE 14
07	IMPORTANT TIPS 15

08 FAQ **16**

09 CERTIFICATE **17**

10 WARRANTY **18**

11 DISCLAIMERS **19**

12 CONTACT US **20**

01 INTRODUCTION

Evolve ahead of time, reshape coffee habits!

A touch of dedication, a measure of persistence, a hint of anticipation, a sense of pride, a product crafted by the hands of a 'Coffee Engineer' is unique. Can we earn your respect through 'quality,' make you feel warmth through 'details,' and demonstrate our dedication through 'functionality'? We welcome your reviews and are eager to listen and continually improve.

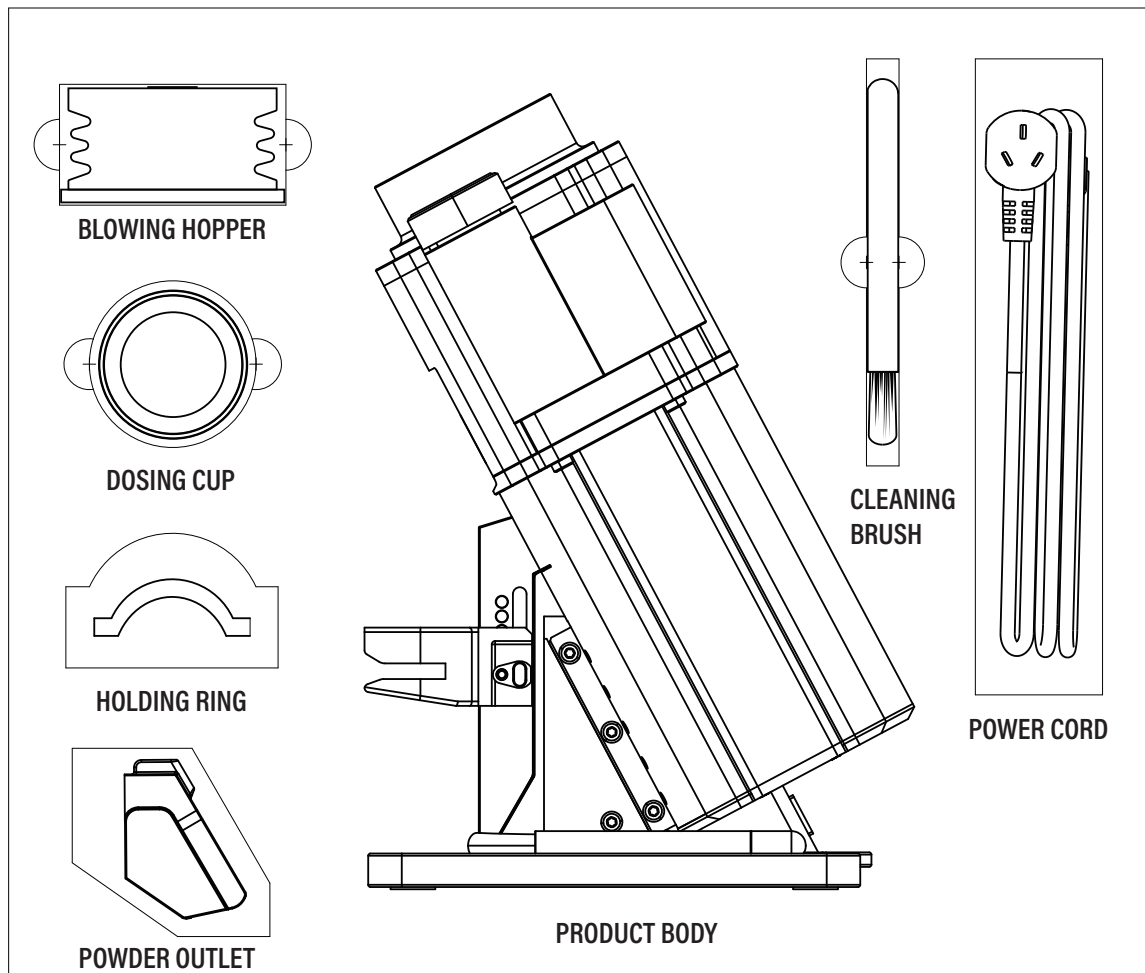
As a member of the coffee equipment manufacturing industry, we have been fortunate to witness the thriving development of the coffee market. Throughout this journey, we have faced challenges and garnered countless fans. We sincerely thank you for your support and expectations. This experience has strengthened our belief in the importance of innovation, the courage to face challenges, and the commitment to producing stable, practical, and intelligent products. Moving forward, we will continue to uphold high-quality standards, improve our systems, lead the industry, and serve our users.

02 SAFETY INSTRUCTION

Thank you for purchasing our product. To facilitate your use and help you quickly familiarize yourself with the product, please read the following information carefully before use:

- Once the product installation and setup are complete, please scan the QR code on the nameplate or enter the serial number to bind the product and activate the warranty. (Failure to provide the serial number may cause inconvenience for after-sales services.)
- Users must fully understand the operation methods and review the precautions to avoid personal injury or damage to the machine due to improper operation.
- For common problems, please consult the 'Quick Use' and 'FAQ' sections for assistance. If the problems cannot be resolved, please scan the QR code on the nameplate for quick repair services. Our engineers will promptly contact you.
- If you have any comments or suggestions, you can provide feedback through official channels. We will make every effort to offer effective solutions.
- Unauthorized disassembly of burrs or incorrect parameter settings can lead to wear or even damage to the burr.

03 MACHINE PARTS VIEW



Please first remove all packaging materials used for securing the components.

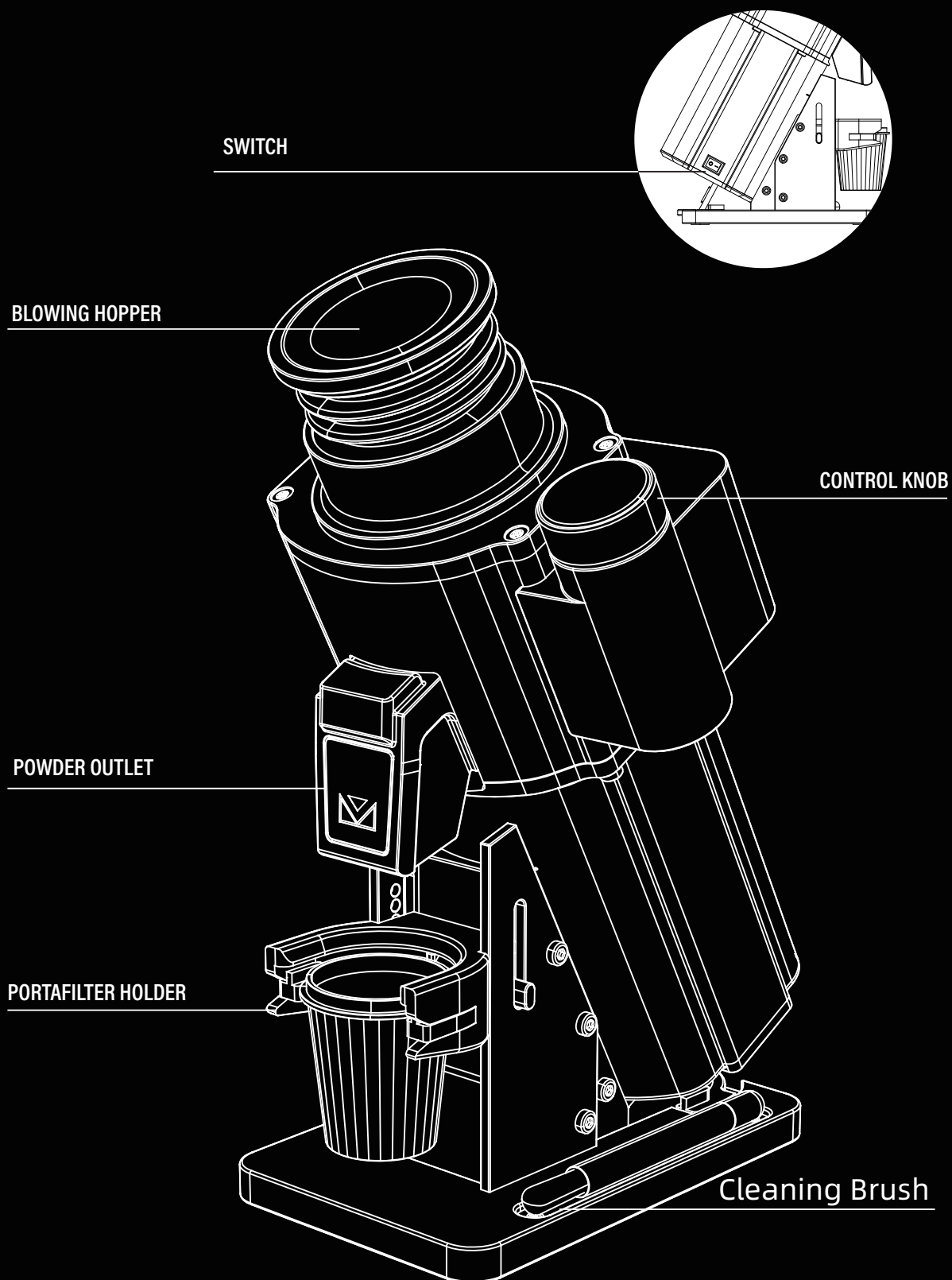
Ensure that the power cord, powder outlet, and blowing hopper are correctly installed and securely connected.

In case of malfunctions, please contact the official after-sales service immediately to arrange for repairs. Attempting to repair the machine on your own may cause damage to the equipment.

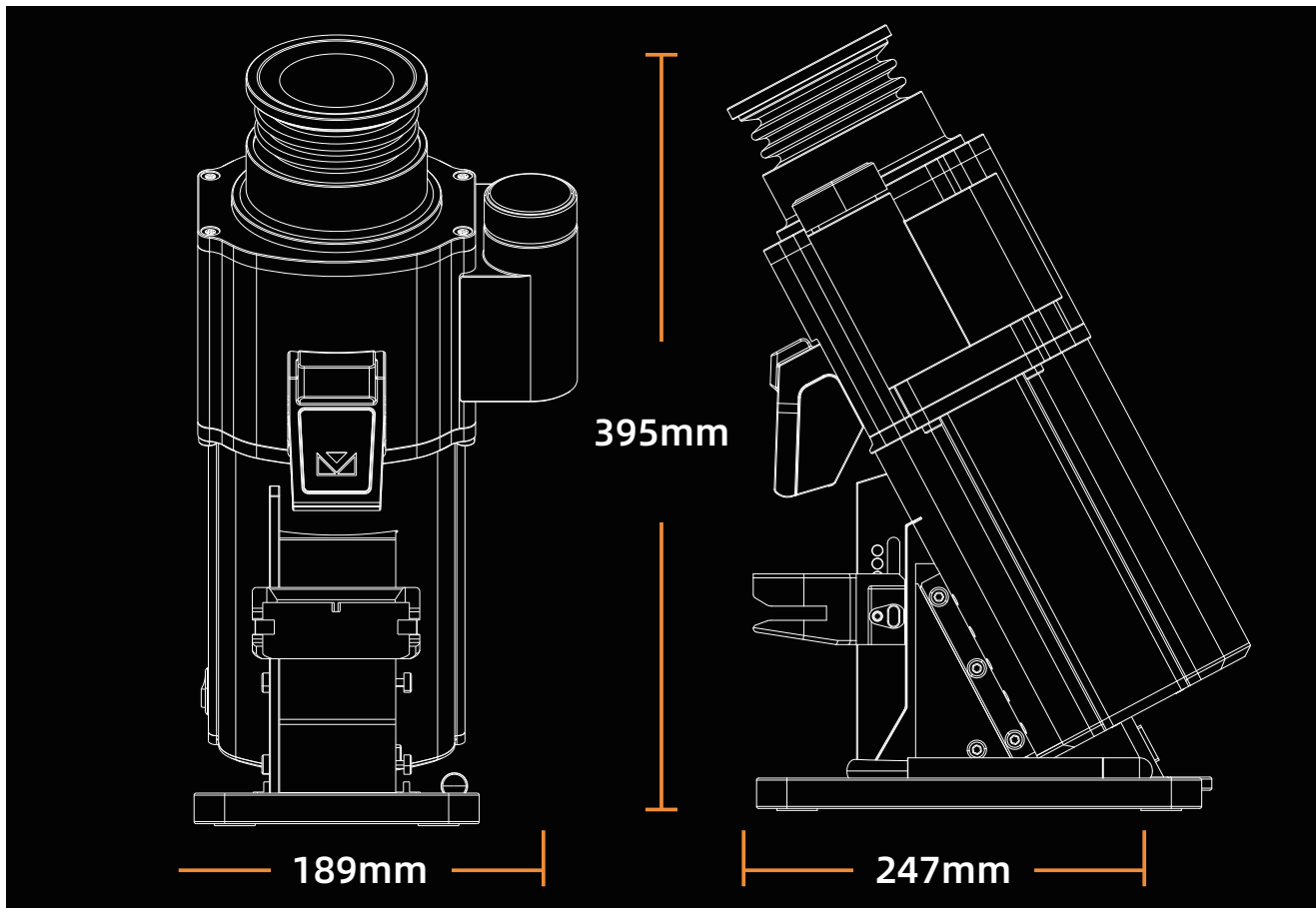
03 MACHINE PARTS VIEW



03 MACHINE PARTS VIEW



04 MACHINE SIZE



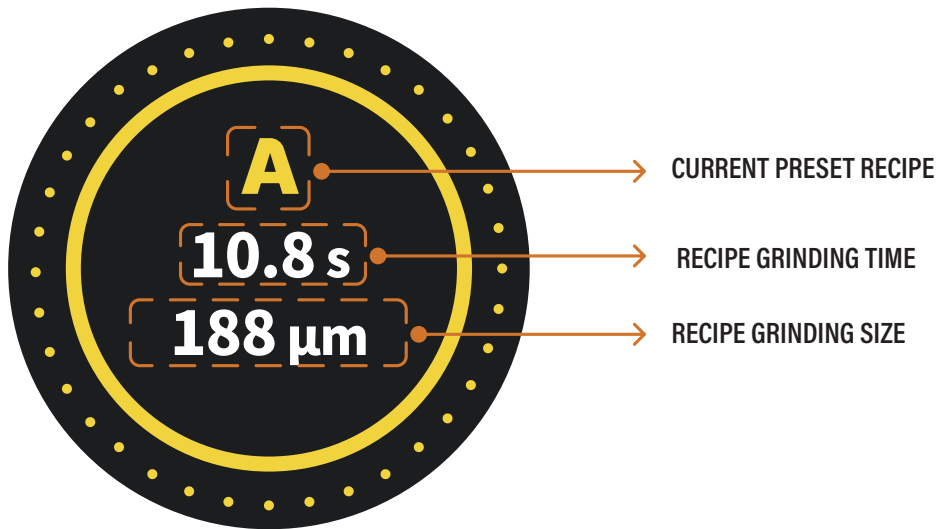
Model	MILO II -LK64
Voltage	220 V-230 V / 50-60 Hz
WATT	400 W
Grinding Burrs	Flat,Φ64mm,stainless steel
Grinding speed	Brushless Motor 200-1000RPM
Grinding size adjustment	Digital Pour Over>>>Espresso
Hopper capacity	Single dose 20-100g
Dosing mode	time
Preset programs	9
Display	IOT screen : 1.28"
Material & Color	AL (grey /white /black)
Specification	18.9(W) * 24.7 (D) * 39.5 (H) CM
Net weight	8.2KG

05 OPERATION GUIDE

BOOT MENU INTRODUCTION

DEFAULT MAIN PAGE

Upon powering the device, the main menu page will default display the recipe. Rotate the knob to switch between different recipes.

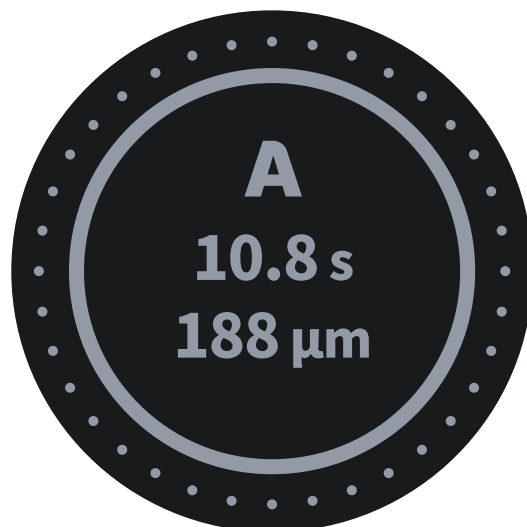


HOME PAGE STATE

When the home page is highlighted, the device is in ready-to-grind state(left figure). Press the knob to start grinding. If the main page is gray, which means the device is in the grinding adjustment state (right figure). Press the knob, and the device will automatically adjust to ready-to-grind state.



READY TO GRIND



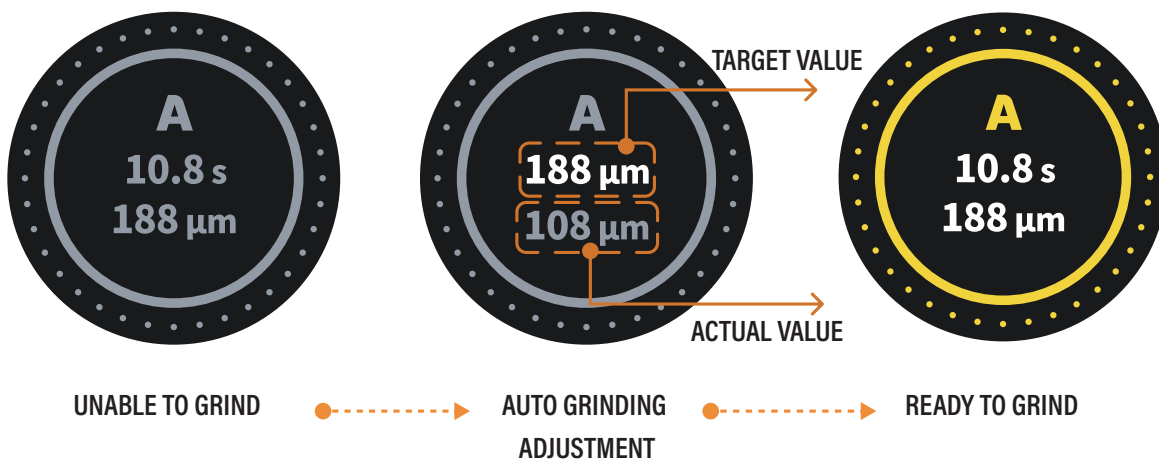
UNABLE TO GRIND

05 OPERATION GUIDE

START GRINDING

AUTO GRINDING ADJUSTMENT

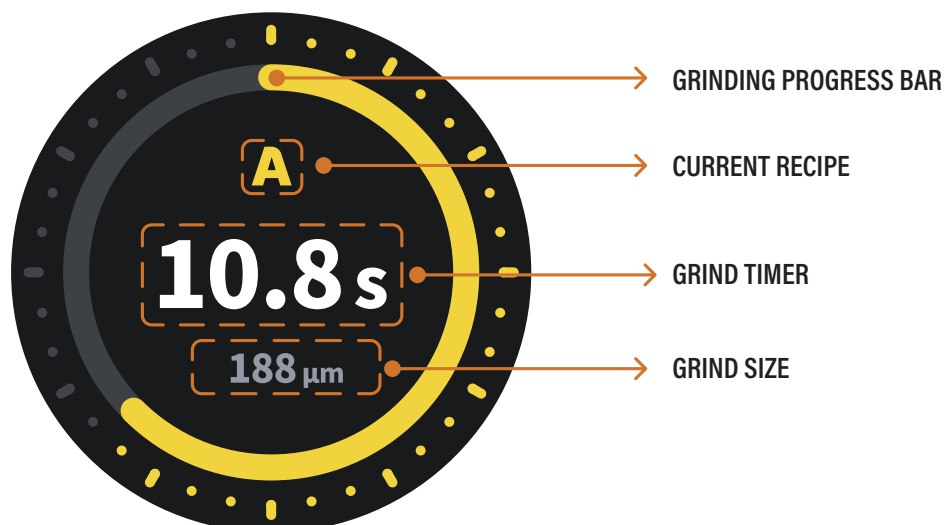
When the recipe shows as unable-to-grind state, the device needs to perform an automatic grinding adjustment before it can start grinding. Press the knob to initiate the automatic grinding adjustment. During this process, you can exit by long-pressing the knob.



GRINDING PAGE

Select a recipe from the main menu. After completing the auto grinding adjustment, press the knob to enter the grinding page and start. Press the knob to pause or resume the process.

If paused for more than 10 seconds, the machine will automatically return to the main menu. Once the grind is completed, the machine will also automatically return to the main menu.



05 OPERATION GUIDE

M (MANUAL)BUTTON GRINDING ADJUSTMENT

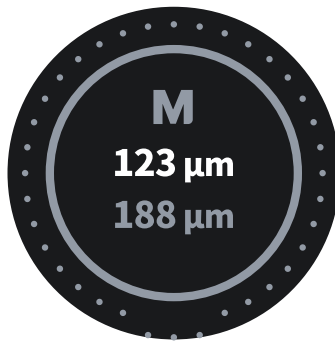
M (MANUAL) BUTTON on the main page, M button defaults to display the current grinding size of the machine (Figure 1).

GRINDING SIZE SETTING: Select the main menu M button (referred to as the M button). Press the knob to enter the quick grinding adjustment page (Figure 2). Rotate the knob to set the grinding size. After setting, long-press the knob to return to the main page.

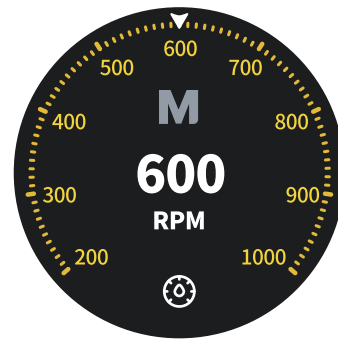
GRINDING SPEED SETTING: Select the M button, and long-press the knob to enter the grinding speed setting page (Figure 3). Rotate the knob to set the grinding speed. After setting, long-press the knob to return to the main menu.



MAIN MENU
M BUTTON (FIGURE 1)



PRESS TO ENTER QUICK GRINDING
ADJUSTMENT (FIGURE 2)



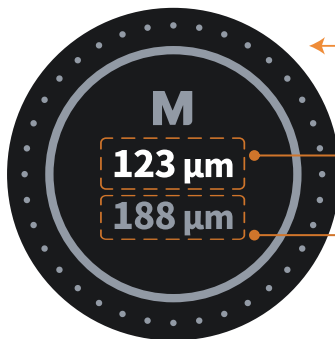
LONG-PRESS TO ENTER
GRINDING SPEED SETTING (FIGURE 3)

MANUAL GRINDING(M BUTTON)

Select the M button and press the knob to enter the quick grinding adjustment settings (Figure 4).

- 1 After setting, press the knob to start grinding(Figure 5), and the device will enter the grinding state.
- 2 If further adjustments are needed during the grinding process (Figure 5), press the knob again to return to the quick grinding adjustment page (Figure 4). Once adjustments are complete, press the knob to continue grinding. Long-press the knob to exit and return to the main page.

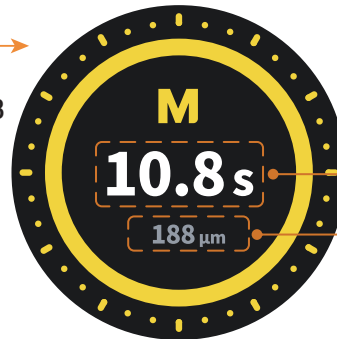
NOTE: On the grinding page, pressing the knob to pause or resume the grinding process. If the machine is paused, long-pressing the knob or leaving it idle will automatically return to the main menu. If the grinding duration exceeds 60 seconds, the device will automatically stop and return to the main page.



PRESS TO ENTER
QUICK GRINDING
ADJUSTMENT (FIGURE 4)

SWITCHING MODES
BY PRESSING THE KNOB

PRESET GRINDING
SIZE
CURRENT GRINDING
SIZE



PRESS TO ENTER
QUICK GRINDING(FIGURE 5)

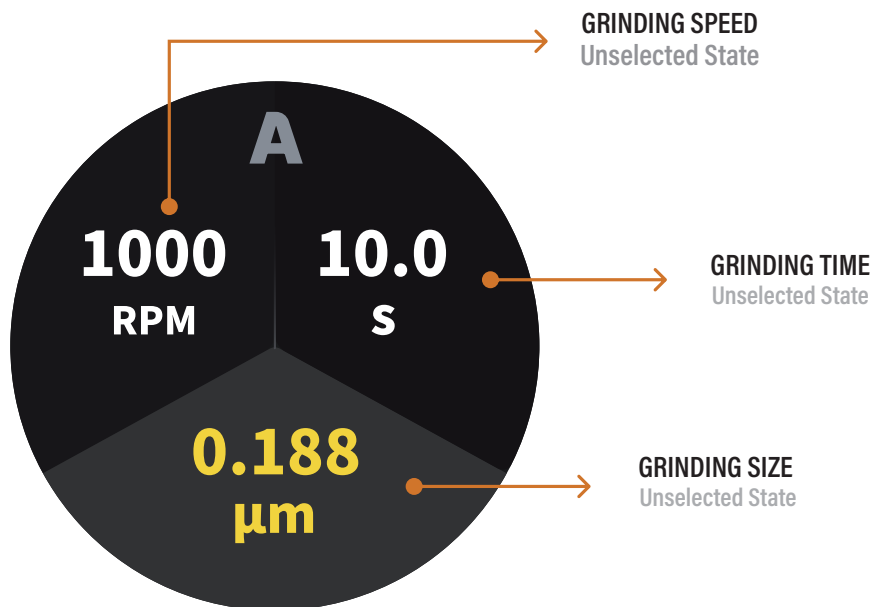
GRINDING TIMER
GRINDING SIZE

05 OPERATION GUIDE

RECIPE SETTINGS

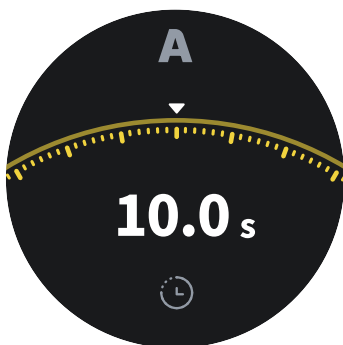
PARAMETER SETTING SELECTION PAGE

Long-press a preset recipe on the main menu to enter the recipe parameter setting page. Rotate the knob to select the desired grinding parameter. Long-press the knob to return to the main menu.

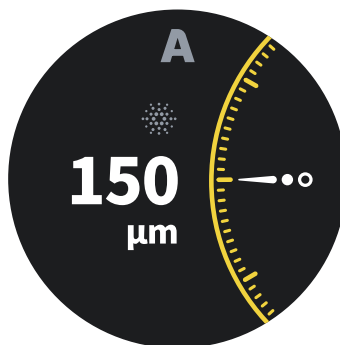


PARAMETER ADJUSTMENT PAGE

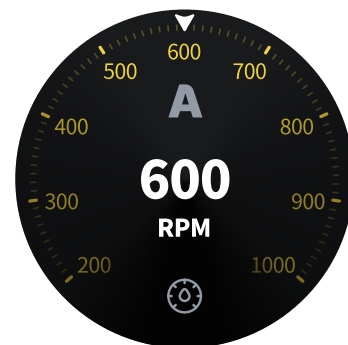
Select the desired grinding parameter and press the knob to enter the parameter value adjustment page. Rotate the knob to adjust the parameter value. Press or long-press the knob to save and exit back to the parameter setting selection page.



GRINDING TIME



GRINDING SIZE

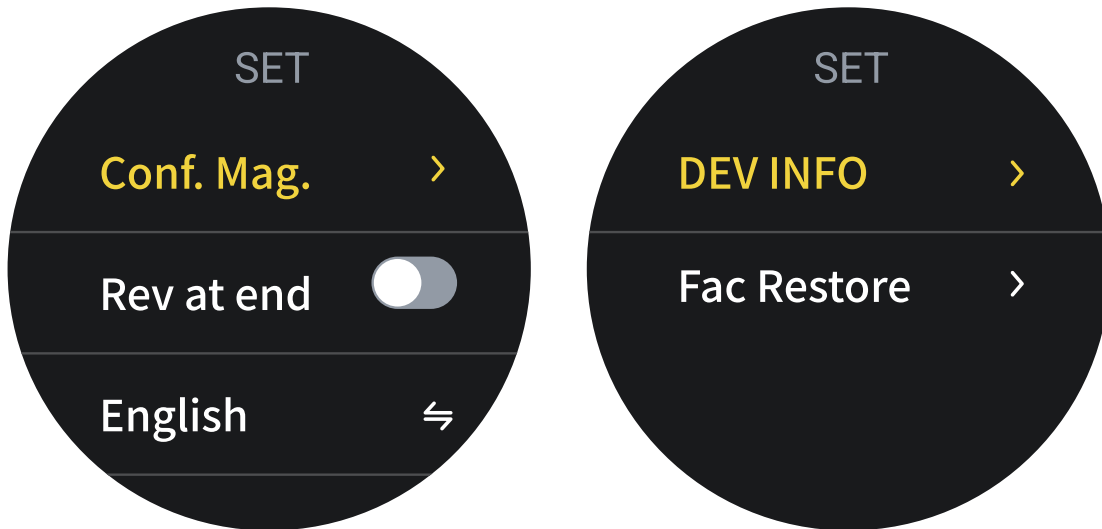


GRINDING SPEED

05 OPERATION GUIDE

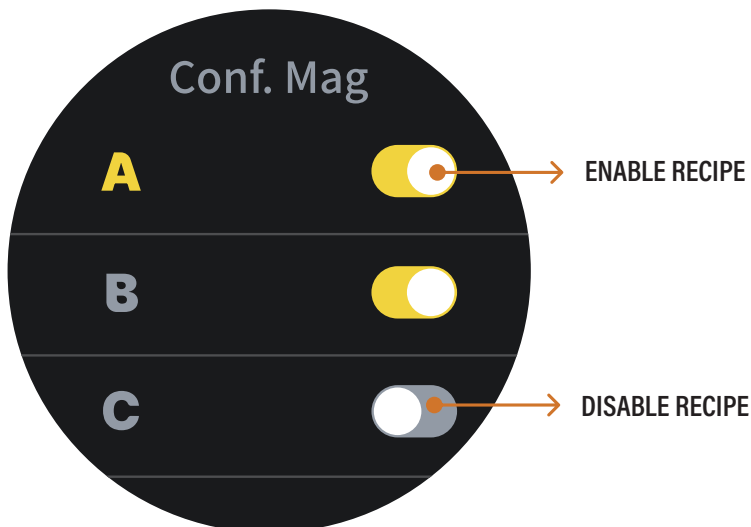
SETTINGS

On the main menu, select 'Settings' and press the knob to enter the settings page. Here, you can access recipe management, grinding rotation, language switching, device information, and factory reset. Long press the knob to return to the main menu.



RECIPE MANAGEMENT

On the settings page, select 'Recipe Management'. Press the knob to enter the recipe management page. The device is preset with 9 recipes. Select a recipe and press the knob to set its visibility on the main menu. Long-press the knob to save and exit back to the settings page.



05 OPERATION GUIDE

GRINDING ROTATION

On the settings page, select 'Grinding Rotation' and press the knob to enable or disable it.



LANGUAGE SWITCH

On the settings page, select 'Language' and press the knob to switch between Chinese and English.



05 OPERATION GUIDE

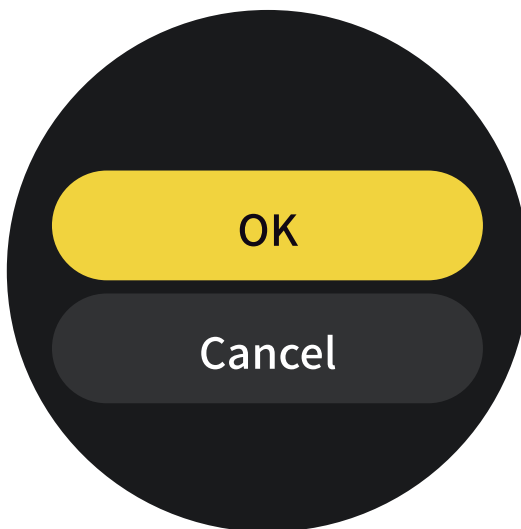
DEVICE INFORMATION

On the settings page, select 'Device Information' and press the knob to enter the device information page, which displays the device model, serial number (SN), and version. Press or long-press the knob to return to the settings page.



FACTORY RESET

On the settings page, select 'Factory Reset'. Pressing the knob will display options to "Confirm" or "Cancel.". Select the 'confirm' button and press the knob to perform a factory reset, then return to the settings page. If you select the 'cancel' button and press the knob, the device will return to the settings page without performing the reset.



06 MAINTENANCE AND CLEANING



01 Cleaning The Powder Outlet	Daily
02 Cleaning The Magnetic Powder Nozzle	Daily
03 Cleaning The Exterior Of The Device	Daily
04 Cleaning The Burr Assembly	Every Three Months
05 Tightening Screws Of The Bean Hopper	Every Three Months
06 Cleaning The Noise Reduction Baffle	Every Three Months
07 Inspecting And Dusting The Electrical System	Every Six Months
08 Inspecting, Lubricating, And Dusting The Main Motor Assembly	Every Six Months
09 Cleaning The Internal Cavity Of The Machine	Every Six Months

It is recommended to perform timely maintenance and adjustments.

07 IMPORTANT TIPS

- Users must fully understand the operation methods and review the precautions to prevent machine or personal injury due to improper handling;
- Ensure the power cord is securely plugged in and keep it away from water to avoid the risk of electric shock.
- Unauthorized disassembly and incorrect parameter settings can cause wear or damage to the burr assembly;
- Please perform regular maintenance and scheduled service.

08 FAQ

ALarm Code	Common Problem	Cause Analysis	Solution
 001	Zeroing Failure	The system fails to complete the zeroing operation	Check if the encoder is functioning properly, inspect for any mechanical obstructions or damage
 002	Zeroing Stroke	The zeroing operation's stroke is shorter than expected	Check the encoder's position for accuracy, inspect the mechanical structure for looseness or damage
 003	Distance Adjustment Failure	Multiple consecutive zeroing attempts fail	Check the system's stability, inspect the encoder and mechanical components for faults, possibly recalibrate or replace damaged parts
 004	Excessive Deviation Alarm	The difference between the stepper motor and the encoder exceeds the preset allowable range, potentially affecting positional accuracy	Ensure the encoder is correctly installed and secure, and recalibrate the synchronization between the stepper motor and encoder
 005	Grinding Motor Driver Chip Overheat Alarm	The temperature of the grinding motor's driver chip exceeds the safety threshold	Check if the cooling is adequate, inspect if the motor is overloaded or has been operating for too long, replace the driver chip if necessary
 006	Grinding Motor Hall Signal Alarm	The grinding motor's Hall sensor signal is abnormal	Check the stability of the Hall sensor's connection, inspect if the sensor is damaged, replace the Hall sensor if necessary
 007	Grinding Motor Overcurrent Alarm	The grinding motor current exceeds the set safety value	Check if the motor is obstructed, inspect if the motor windings are shorted, check if the drive circuit is functioning correctly
 008	Grinding Motor Undervoltage Alarm	The grinding motor's supply voltage is below the normal range	Check if the power supply is stable, inspect the power lines and connections for integrity, check if the motor has other faults that increase power consumption
 009	Grinding Motor Overvoltage Alarm	The grinding motor's supply voltage is above the normal range	Check if the power supply is too high, inspect the voltage regulation for correctness, ensure the voltage matches the motor's rated value
 010	Grinding Motor Overload Alarm	The grinding motor's load exceeds the rated value	Check if the motor has excessive load, inspect if the grinding material is too hard or too much, reduce the load, replace with a more powerful motor if necessary
 011	Grinding Motor Stall Alarm	The grinding motor encounters a blockage during operation and cannot rotate	Check if there are foreign objects obstructing the motor or grinding parts, inspect if the mechanical parts are damaged or deformed, clear the obstruction and check the motor's
 012	Grinding Motor Disconnected Alarm	The grinding motor is not properly connected or the motor is not detected	Check if the motor's connection is secure, inspect the communication between the motor and the control system, check if the motor is damaged and replace if necessary

09 CERTIFICATE



10 WARRANTY

1. Party a's equipment comes with a 12-month warranty for spare parts from the date of shipment, excluding wearable parts, labor fees for repairs, and other expenses. Shipping fees for parts within the warranty period are borne by party a.
2. Dealers and agents have the option to purchase an additional one-year extended warranty service: a 12-month warranty on the entire machine, including parts, repair, and labor fees.
3. Warranty service is valid only under normal use. Any product damaged due to human factors or falling under the following conditions will not be covered by the warranty but can be repaired at the owner's expense:
 - 3.1 Damage caused by force majeure or accidents (e.G., Floods, fires, earthquakes, lightning strikes, animal bites, etc.);
 - 3.2 Damage to the product caused by improper use, maintenance, or storage failing to follow the product operation manual;
 - 3.3 All exterior and maintenance parts, such as aluminum shells, stainless steel mirror panels, paint surfaces, seals, plastic parts, etc.;
 - 3.4 Damage to the product caused by self-modification or self-disassembly;
Products purchased from non-authorized dealers, not covered under the warranty policy;
 - 3.5 Verbal promises by the salesperson that go beyond the stipulations of this agreement will not be honored;
 - 3.6 Products that are beyond the warranty period or scope;
 - 3.7 Products not originally produced by our company, discounted products, or products explicitly excluded from warranty coverage in the sales contract.

11 WEARABLE PARTS INSTRUCTIONS

Please Inspect And Accept The Machine's Wearable Parts Within Three Days Of Receipt. After Three Days, These Parts Will Not Be Covered By The Warranty. Wearable Parts Require Regular Maintenance And Care;

FOR DETAILS, CONSULT THE INSTRUCTIONS BELOW.

PART NAME	DESCRIPTION
Burr Assembly	Unauthorized disassembly and incorrect parameter settings can result in burr wear or damage.
Small Round Screen	Please avoid knocking or bumping the screen.
Exterior Parts	Includes: sheet metal and plastic parts; plastic parts may deform if exposed to high temperatures for prolonged periods